

INTERTECH PUMP COMPANY

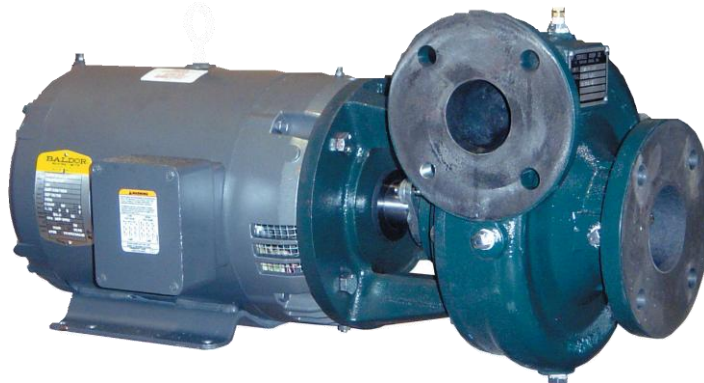
Model 2.5WH-CC

AVAILABLE MOUNTING CONFIGURATIONS

2.5WH-CC CLOSE-COUPLED
2.5WH-VC VERTICAL CLOSE-COUPLED

OPERATING LEVELS

MIN FLOW	55 GPM	12.5 m3/h
MAX FLOW	540 GPM	122.65 m3/h
DISCHARGE SIZE	2.5"	63.5 mm
SUCTION SIZE	3"	76.2 mm
MAX SPEED	3,600 RPM	3,600 RPM
SOLIDS HANDLING	.5"	12.7 mm
MAX PRESSURE	175 PSID	1,206.58 kPa
SHUT-OFF HEAD	235' @ 101.73 PSID	71.63 m @ 701.4 kPa
BEP HEAD	206' @ 89.18 PSID	62.79 m @ 614.53 kPa
BEP FLOW	415 GPM	94.26 m3/h
BEP EFFICIENCY	80%	80%



A typical picture of the pump is shown. Please contact InterTech Pump Company for further details. All information is approximate and for general guidance only.

PARTS	CAST IRON BRONZE FITTED	ALL IRON	NSF - CERTIFIED
WEAR RING	BRONZE SAE 660	CAST IRON ASTM A48 CL30	ASTM B271 C95800 OR ASTM B505 C95800
IMPELLER	CAST IRON ASTM A48 CL30	CAST IRON ASTM A48 CL30	ASTM B148 C95800
VOLUTE	CAST IRON ASTM A48 CL30	CAST IRON ASTM A48 CL30	ASTM A48 CL30 GRAY IRON
SHAFT	CARBON STEEL	CARBON STEEL	CARBON STEEL
SHAFT SLEEVE	BRONZE SAE 660	303 STAINLESS STEEL	303 STAINLESS STEEL
BACKPLATE	CAST IRON ASTM A48 CL30	CAST IRON ASTM A48 CL30	ASTM A48 CL30 GRAY IRON
PACKING	GRAPHITED ACRYLIC	GRAPHITED ACRYLIC	GRAPHITED ACRYLIC
MECHANICAL SEAL	T-1, BUNA-CARBON/CERAMIC	T-1, BUNA-CARBON/CERAMIC	T-1, BUNA-CARBON/CERAMIC
MOTOR	OPEN DRIPPROOF - STANDARD TEFC AND OTHERS - OPTIONAL	OPEN DRIPPROOF - STANDARD TEFC AND OTHERS - OPTIONAL	OPEN DRIPPROOF - STANDARD TEFC AND OTHERS - OPTIONAL

The 2.5 WH-CC pump is designed with 's renowned quality and durability. It features a 2.5" discharge and a 3" suction, enclosed multi-vane impeller and flanged tangential single volute. Available standard in All Iron, also available in Cast-Iron Bronze Fitted or NSF 61 Certified configurations. Shower Curtain shield protects close coupled motor.

- Industry-leading two-year warranty
- Industry-leading efficiencies
- Standard cast iron bronze fitted construction (CI impeller)
- Back pull-out design
- Replaceable suction wear ring and shaft sleeve
- "Shower curtain shield" bearing protection
- Low operating costs
- RunDry™ option (Indefinite run dry capability)
- Optional Cycloseal® with T-1 mechanical seal
- Available NSF-61 Certified



AGRICULTURE



FOOD



INDUSTRIAL



MINING



MUNICIPAL



OIL & GAS



REFRIGERATION



RENTAL

INTERTECH PUMP COMPANY

Model 2.5WH-CC

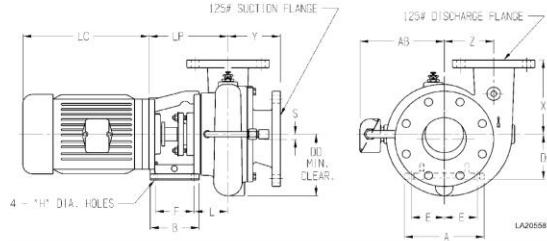


Fig 1

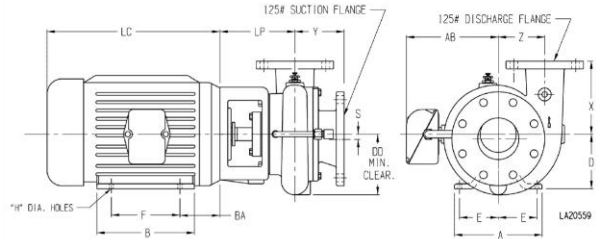


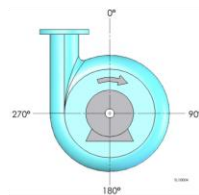
Fig 2

NOTES:

- Motor dimensions are for ODP motors and may vary depending on manufacturer.
- Flange connection dimension can vary $\pm .12$ inch.
- Do not use for construction unless certified.

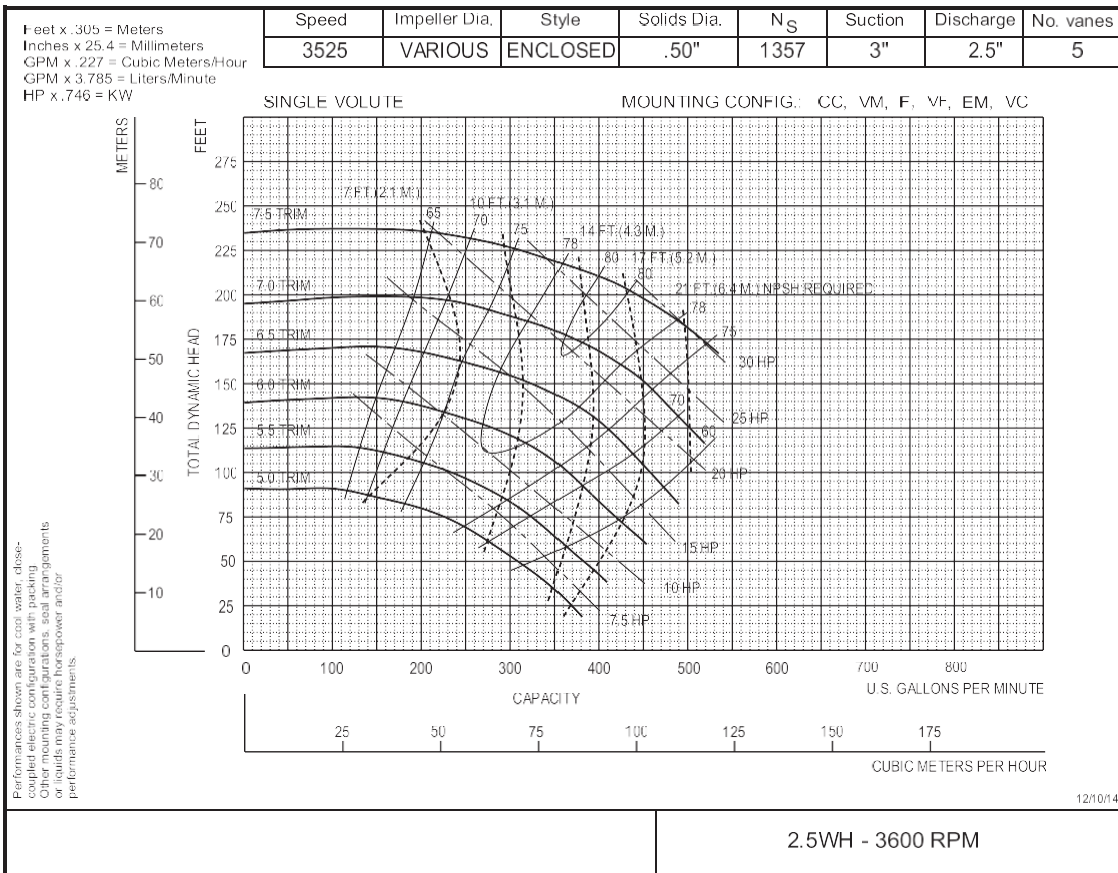
NOTES:

Discharge positions are viewed from the drive end. Standard increments of discharge position are shown in the chart below (DISCH INCR). Consult factory for other discharge positions.



PUMP DIMENSIONS												
MODEL	CONNECTION		DISCH. INCR.	AK DIM.	Fig.	DD	L	S	X	Y	Z	LP
	DISCH.	SUCT.										
2.5WH	2.5	3	90°	4.5	1	7	2.97	-	5.69	4.28	4.25	7.06
				8.5	2	7	-	5.69	4.28	4.25	7.88	

MOTOR FRAME	AK DIM.	MOTOR DIMENSION									
		A	B	D	E	F	H	AB	BA	LC	
143-5	4.5	6.5	5.94	3.5	2.75	5	0.34	5.62	2.88	10	
	4.5	8.62	6.5	4.5	3.75	5.5	0.41	6.75	3.5	12.25	
182-3	8.5	8.62	6.5	4.5	3.75	5.5	0.41	6.75	3.5	12.25	
	8.5	9.5	8	5.25	4.25	7	0.41	7.94	4.5	13.69	
254-6	8.5	11.25	11.25	6.25	5	10	0.53	9.5	5	17.94	
284-6	12.5	12.25	12.25	7	5.5	11	0.53	11.37	5	21.31	
324-6	12.5	14.25	13.75	8	6.25	12	0.66	12.22	5.5	22.19	
364-5	12.5	15.75	14	9	7	12.25	0.66	13.2	6.12	24.31	



SUPERCEDES: 5/27/09

25WH36

12/10/14