

STANDARD SPECIFICATION

Discharge - 1.25 inch discharge

Suction - 3 inch suction

Impeller - Semi-open, threaded, 4 vane: handles .80" solids

Volute - Right hand tangential discharge, eight positions

Mechanical Seal or Traditional Packing - Single, type 21, silicon carbide/tungsten carbide mechanical seal: Cycloseal® design, Run-dry available

Materials of Construction

- Cast iron casing, cast iron impeller
- Other materials available

MOUNTING OPTIONS

- **Close Coupled Electric**
 - InterTech's Energy Efficient Design
 - Single and Three Phase Available
- **Frame Mount**
 - InterTech F85
- **Engine Bracket**
 - InterTech EM309 (SAE 5)

AVAILABILITY

- **Quick Ship**
 - Finished Product Regularly Stocked (48 Hours)
- **Preferred Pump**
 - Finished Components Regularly Stocked (10 business days)
- **Specialty Pump**
 - InterTech Pump Company will design and manufacture a variation of this pump specifically designed for your application



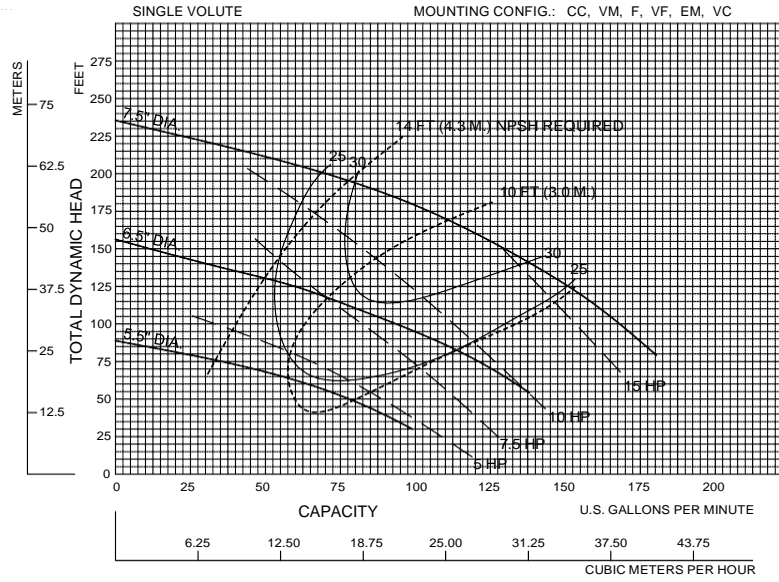
FEATURES & BENEFITS

- **InterTech's Tradition of Excellence:**
 - **Highest quality products**
 - **Experience**
 - Over 50 years in the centrifugal pump business
 - **Optimum Hydraulics**
 - In house engineering staff and test lab facilities
 - **Strong Local Dealer Support**
 - Our agricultural products are sold only through authorized dealerships
 - Dealerships provide full service to customers from sales to replacement parts
 - Dealers maintain and improve their knowledge at educational activities like InterTech's "Pump School"
- **Exceptional Design:**
 - **Efficiency**
 - Effectively converts energy into fluid flow and pressure
 - **Long Product Life**
 - Thick walled castings
 - Heavy duty shafts
 - 20,000 hour bearings
 - Replaceable wear rings and shaft sleeves
 - Reduced thrust load through design and balance lines where appropriate

PERFORMANCE CURVES

**1.25 YML
3600 RPM**

| Speed | Impeller Dia. | Style | Solids Dia. | N _S | Suction | Discharge | No. vanes |
|-------|---------------|-----------|-------------|----------------|---------|-----------|-----------|
| 3525 | VARIOUS | SEMI-OPEN | .80" | 850 | 3" | 1.25" | 4 |



Note:
Curves also available in 1800 and various RPM

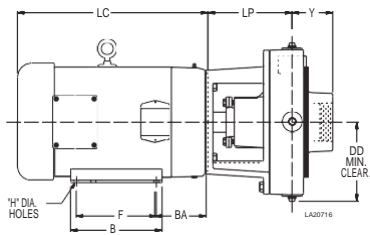


Figure 1

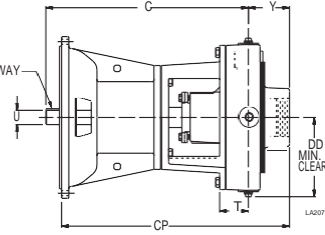
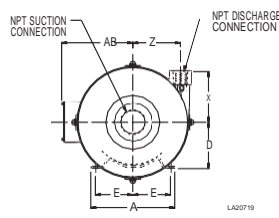


Figure 3

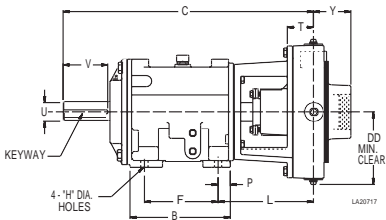
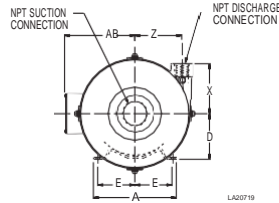


Figure 2



PUMP DIMENSIONS

| MOUNT | Fig. | A | AB | B | BA | C | CP | D | DD | E | F | H | L | LC | LP | P | U | V | X | Y | Z | KEYWAY |
|-------|------|-----|------|------|-----|-------|-------|------|------|------|---|------|------|-------|------|------|------|------|------|------|------|-----------|
| CC | 1 | 9.5 | 7.94 | 8 | 4.5 | - | - | - | 7.38 | 4.25 | 7 | 0.41 | - | 13.69 | 7.34 | - | - | - | 5.75 | 3.56 | 5.38 | - |
| F85 | 2 | 6.5 | - | 9.52 | - | 23.66 | - | 5.25 | 7.38 | 2.5 | 7 | 0.69 | 9.06 | - | - | 1.16 | 2 | 4.81 | 5.75 | 3.56 | - | .50 X .25 |
| EM309 | 3 | - | - | - | - | 17.57 | 19.77 | - | 7.38 | - | - | - | - | - | - | - | 1.25 | - | 5.75 | 3.56 | 5.38 | .25 X .12 |

InterTech Pump Company

ISO9001:2000 CERTIFIED